



Bord Oideachais agus Oiliúna Dublin and Dún Laoghaire
Átha Cliath agus Dhún Laoghaire Education and Training Board

ÉRIU COMMUNITY COLLEGE

OPENING IN THE
GROUNDS OF
LUTTRELLSTOWN
COMMUNITY
CENTRE,
DUBLIN 15,
SEPTEMBER 2020



**LEARN
ACHIEVE
SUCCEED**

YOUR COMMUNITY – YOUR COLLEGE

Dublin and Dún Laoghaire Education and Training Board (DDLETB) Community Colleges form an essential part of life and living throughout their local communities. Our educational ethos is one of total inclusion and mutual respect in the formation of life skills which enable young people to meet their full potential in society. We have a heritage of expertise and experience in community based education spanning 80 years of service throughout County Dublin.

Our schools have evolved constantly to offer and educational experience which is reflective of modern day need and changes in society. Our teachers are skilled in delivery of an all-round education which meets with the personal and career development of young people.

As student centred secondary schools, your community colleges believe in partnership, accountability, transparency, inclusion and respect for diversity, parental choice and equality.

Community Colleges empower students, teachers and parents collectively to achieve educational progress in a positive and encouraging atmosphere. This extends into the built environment where new schools are designed to contribute to the overall achievement of a high quality educational experience.



COLLEGE MOTTO

Ag obair as lámhe a
céile!

Working hand in hand!

SCHOOL ETHOS



Ériu Community College is a Dublin and Dún Laoghaire Education and Training Board (DDLETB), co-educational, multi-denominational, post-primary school underpinned by the core values of

- Excellence in Education
- Care
- Respect
- Equality and
- Community

The Board of Management will seek to inculcate a value for culture and belief traditions and will seek to be a caring and compassionate community where justice and truth will be central elements.



CORE VALUES

Cooperation, Tolerance & Respect, Empowerment

We are learning to know; learning to do; learning to be; learning to live together.

This newly established Ériu Community College provides Post Primary Programmes to male and female students.

We care about students at Ériu Community College and understand the difficulties that may be experienced in the transition between primary school and secondary school. Each class tutor provides encouragement, support and help when needed. We have a transition programme called Begin Again which will help your children make the transition from Primary to Post primary seamlessly.

CURRICULUM

As a Community College, we provide a post primary education which is

- appropriate to the abilities and needs of all students
- inclusive and learner centred in a virtual learning community
- fostering and developing the social, personal and moral development of all.

We work together, students, parents and staff, to create an inclusive, mutually supportive ICT-driven community focused on learning and teaching.

In this learning community students are encouraged to reach their best in all aspects of their learning and lives. We aim to encourage, enrich and empower the lives of everyone through our focus on global responsibility.

Ériu Community College nurtures leadership and resilience in order to prepare students for the competitive world beyond school.

CURRICULUM PROVISION

The Junior Cycle is offered in a variety of subjects, while Transition Year, the Leaving Certificate, the Leaving Certificate Vocational programme and the Leaving Certificate Applied programmes will be available at Senior Cycle.

A full range of subjects including languages, the humanities, arts, technologies and sciences are offered at both junior and senior cycle.

JUNIOR CYCLE

The curriculum available in Ériu Community College will be based on the syllabi of the Department of Education and Skills. The core subjects are likely to be:

Irish

English

Mathematics

Modern Foreign Languages - French, German,

Spanish

Science

Religious Education

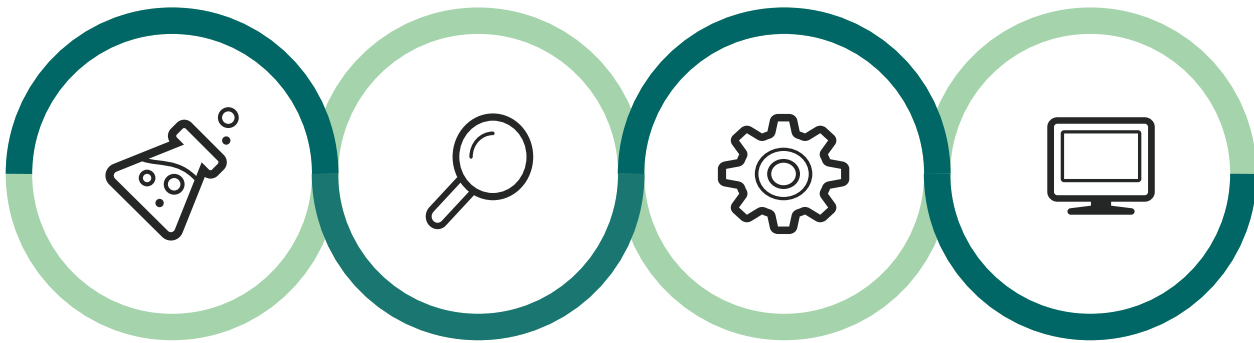
Geography

History

PE

SPHE (including RSE)

CSPE



Option in the early years will be determined by the range of teaching subjects among staff and might include:

Visual Art

Home Economics

Business Studies

Music

Graphics

Applied Technology

Engineering

Wood Technology

Two short courses are offered – Coding, Digital Media and Literacy (Combined)

EXTRA-CURRICULAR -

Students are encouraged to take part in all aspects of school life including extra-curricular activities.

Throughout all its activities, Ériu Community College is committed to supporting young people in their academic, moral, spiritual, social and personal development so that each student can reach their best.

ADMISSION EQUALITY STATEMENT

The School ensures that no student receives less favourable treatment in admission and school participation on the grounds of race, gender, civil status, family status, disability, special educational needs, religion, sexual orientation or membership of the travelling community.

VIRTUAL LEARNING ENVIRONMENT

Ériu Community College is a one to one device school as we value Digital Learning. The ability to use ICT effectively is an essential life skill in today's world.

Each class room is equipped with an interactive whiteboard and a fast and secure Wi-Fi system. As ICT is continually developing and new technologies are emerging we, as a college, strive to give all students the ICT skills necessary for their future.

We use the college Virtual Learning Environment of OneDrive, OneNote and SharePoint.

TEACHING AND LEARNING

Teachers at Ériu Community College are highly motivated and pride themselves on a very high level of teacher student engagement. Teaching practices include profiling of students, individualized student reports, support from the Pastoral Care team and involve the most effective interactive teaching and learning methodologies to promote the highest academic standards.

Ériu Community College offers a comprehensive and varied curriculum which provides students with a range of subjects that meet their needs and builds a solid foundation for career choice in college in the future.

STAFF SUPPORT:

It is the policy of Dublin and Dún Laoghaire Education and Training Board (DDLETB) to work closely with its teaching staff to ensure quality personal and professional development. The focus for this college will be on the development of ICT skills pertaining to learning and teaching.

ROLE OF PARENTS/GUARDIANS:

We operate an open door policy.

Ériu Community College will adopt a partnership approach with parents/guardians, as we recognise parents as the primary educators of their children. We encourage parents to take an active role in their child's education throughout their time at this college. An active, democratically elected Parent Association will be established early in the life of the college.



FIRST YEAR IN ÉCC:

- A thorough supportive induction programme, Begin Again, that starts in 6th class and runs through out 1st year
- School will have 58 minute classes to facilitate interactive engaging lessons.
- Uniform –
 - Jumper with the college crest
 - White shirt
 - Trousers or College patterned skirt
 - Black shoes (no runners or trainers)
 - For PE: Official school coloured tee-shirt, crested tracksuit bottoms with white soled trainers or runners

WHY SHOULD I CHOOSE ÉRIU COMMUNITY COLLEGE?

- It is a friendly, welcoming and innovative place to be.
- Students at the centre of the learning
- Highest academic and Pastoral Care standards
- Teachers in all subject areas strive for excellence in a caring and supportive manner
- We offer a wide variety of subjects
- We value everyone contribution to the life of the college
- We focus on computer literacy which is essential in the global world
- We provide a range of extra and co-curricular activities to suit the needs and interests of the students
- We deliver an excellent learning support and guidance programme

CONTACT ÉRIU COMMUNITY COLLEGE:

The school is currently enrolling for September and the application form is available on www.ddletb.ie on this link

<http://www.ddletb.ie/application-admissions-policy-for-blanchardstown-community-college/>

Also contact the principal

Michael Flynn, Principal on 0877992770 and/or michaelflynn@ddletb.ie.

ÉRIU COMMUNITY COLLEGE

OPENING SEPTEMBER 2020



Bord Oideachais agus Oiliúna Dublin and Dún Laoghaire
Átha Cliath agus Dhún Laoghaire Education and Training Board

**LEARN
ACHIEVE
SUCCEED**